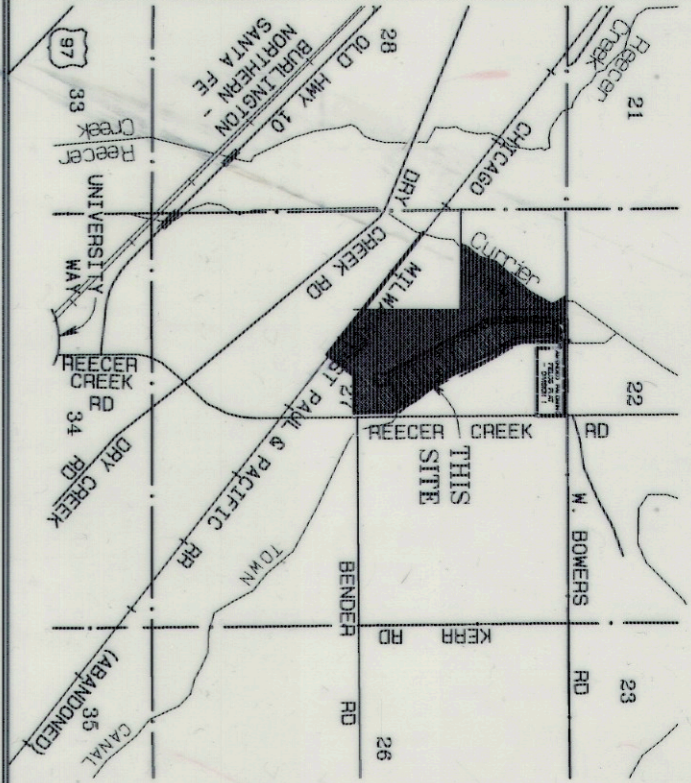


**VICINITY MAP**  
(Not To Scale)



**APPROVALS**

**KITTITAS COUNTY DEPARTMENT OF PUBLIC WORKS**

I HEREBY CERTIFY that the Palomino Fields Plat - Division II, has been examined by me and I approve this plat.

Dated this 14<sup>th</sup> Day of MAY, A.D., 2019.

*Maule E. Cook*  
Kittitas County Engineer

**HEALTH DEPARTMENT**

I HEREBY CERTIFY that the Palomino Fields Plat - Division II, has been examined by me and I find that the sewage and water system herein shown does meet and comply with all requirements of the County Health Dept.

Dated this 15<sup>th</sup> Day of MAY, A.D., 2019.

..... A.D., 2019.

Kittitas County Health Officer

**CERTIFICATE OF PLANNING DEPT.**

I HEREBY CERTIFY that the Palomino Fields Plat - Division II, has been examined by me and find that it conforms to the Comprehensive Plan of the Kittitas County Planning Commission.

Dated this 15<sup>th</sup> Day of MAY, A.D., 2019.

*Kimberly M. Spink*  
Kittitas County Planning Official

**CERTIFICATE OF TREASURER**

I HEREBY CERTIFY that the taxes and assessments are paid for the preceding years and for this year in which the plat is now to be filed. Parcel No. 491033, 11801, and 11802.

Dated this 15<sup>th</sup> Day of MAY, A.D., 2019.

..... A.D., 2019.

Kittitas County Treasurer

**CERTIFICATE OF ASSESSOR**

I HEREBY CERTIFY that the Palomino Fields Plat - Division II, has been examined by me and I find the property to be in an acceptable condition for platting. Parcel No's. 491033, 11801, and 11802.

Dated this 15<sup>th</sup> Day of MAY, A.D., 2019.

*Adam Owen*  
Kittitas County Assessor

**BOARD OF COUNTY COMMISSIONERS**

EXAMINED AND APPROVED this ..... day of ..... A.D., 2019.

.....

Chairperson

.....

ATTEST:

.....

Clerk of the Board

**PALOMINO FIELDS PLAT - DIVISION II**  
A PTN. OF THE E 1/2 OF THE NW 1/4 OF SECTION 27, TOWNSHIP 18 NORTH, RANGE 18 EAST, W.M.  
KITTITAS COUNTY, WASHINGTON  
ENTIRE PLAT MAP

RECEIVING NO. ....  
LPF - 19-00003  
LP - 07-00031

AUDITOR'S CERTIFICATE

Filed for record this ..... day of ..... 2019, at ..... M. in Book ..... of Surveys at Page(s) .....

under Auditor's File Number ..... at the request of Western Pacific Engineering & Survey, Inc.

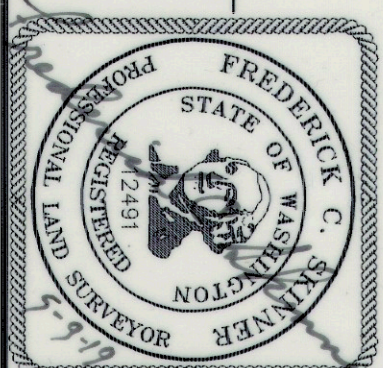
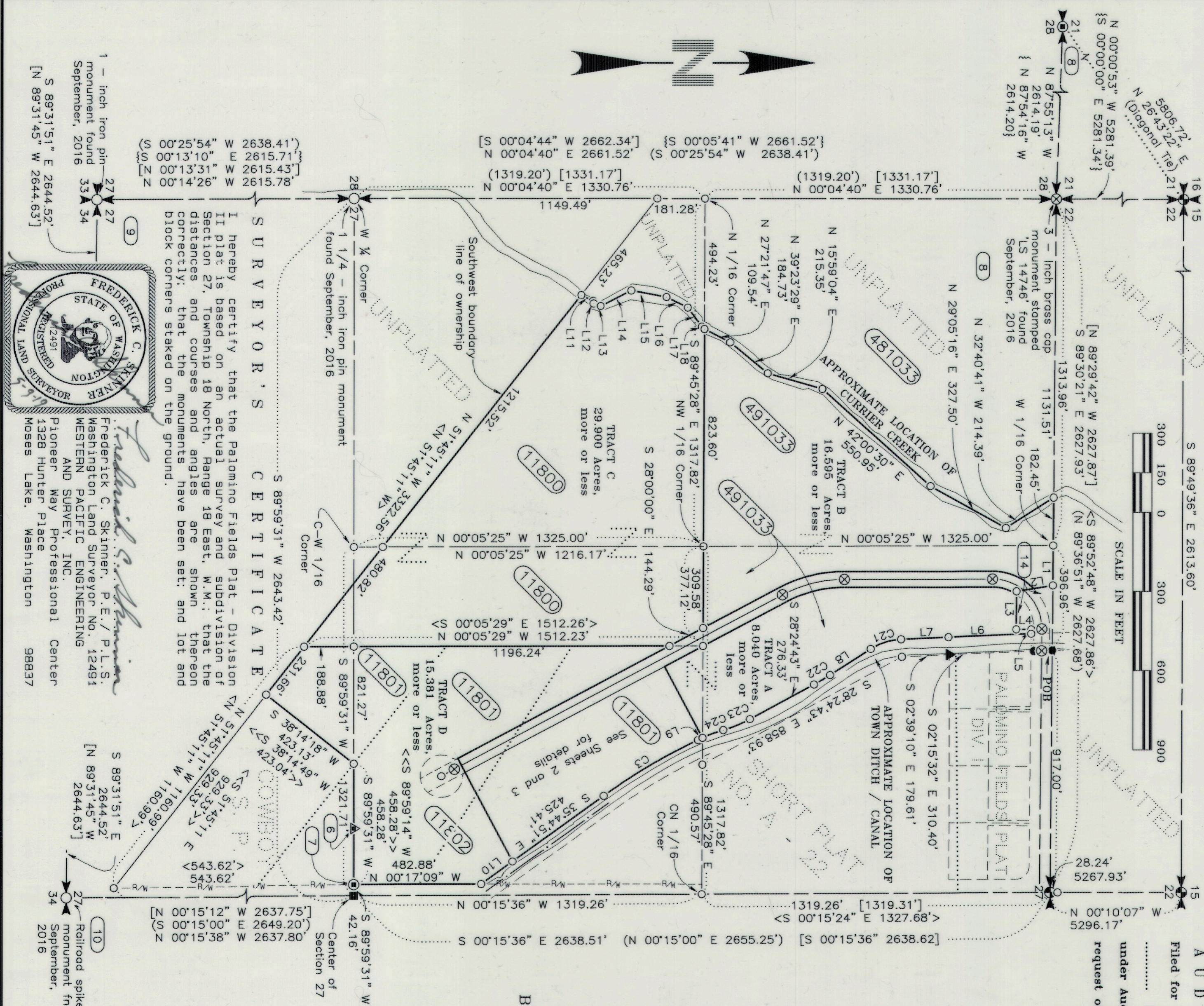
.....  
County Auditor  
.....  
Deputy County Auditor

**NOTICE**

This is a Major Plat and as such is not intended to show, nor does it purport to show, all easements and encumbrances.

**BASIS OF BEARINGS**

The bearing for the east boundary line of the Northwest quarter of Section 27 equal Cruise & Nelson's bearing of South 00°15'36" East for the same line as shown on the F.H.A. U.S.D.A. property survey found under Kittitas County's Auditor File No. 199702200014



*Frederick C. Skinner*  
Frederick C. Skinner, P.E./P.L.S.  
Washington Land Surveyor No. 12491  
WESTERN PACIFIC ENGINEERING  
AND SURVEY, INC.  
Pioneer Way Professional Center  
1328 Hunter Place  
Moses Lake, Washington 98837

**WESTERN PACIFIC ENGINEERING & SURVEY**

A TERRA DEVELOPMENT SERVICES CORPORATION  
1328 E. Hunter Place, Moses Lake, Washington  
T:(509)765-1023 F:(509)765-1298  
Services in Washington and Idaho

**LCU, INC.**

Surveyed by LMH Scale 1" = 300'  
Drawn by Tml/FCS Sheet 1 of 7  
Checked by FCS Project No. 18146

**INSTRUMENT USED**  
Trimble R10 GPS  
Receivers  
Traverse Closure  
Meas Standards Per  
WAC 332-130-090

**INDEXING DATA**  
S27 T18N R18E